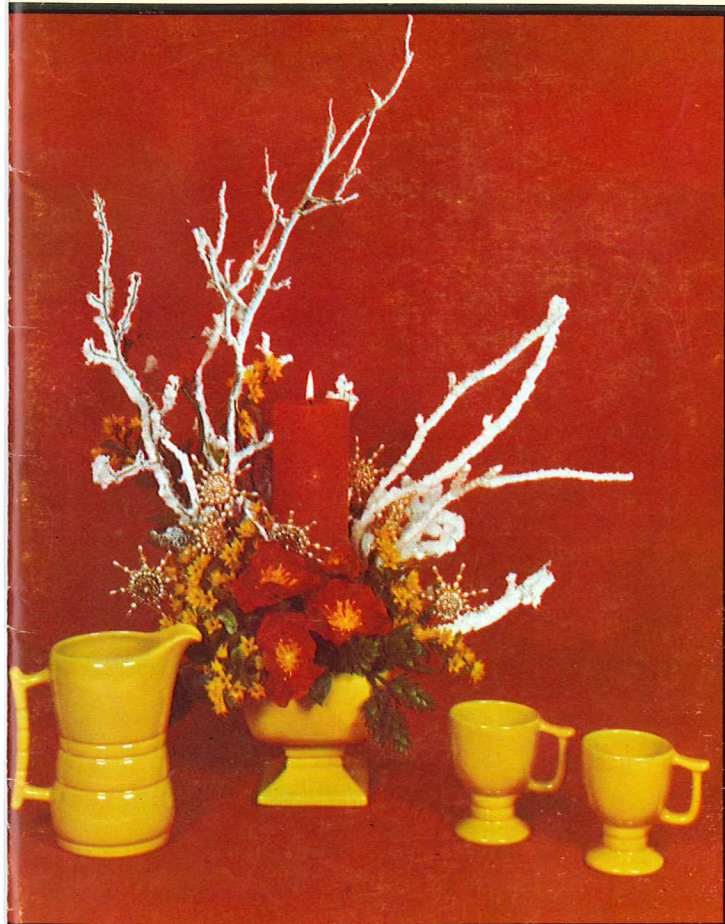




*Four Seasons
of Accent with*

AUTUMN YELLOW



FRANKOMA POTTERY for 1975



LAZYBONE PATTERN shown in Brown Satin



WESTWIND PATTERN shown in Flame and White



OKLAHOMA PLAINSMAN PATTERN shown in Woodland Moss



WAGON WHEELS PATTERN shown in Prairie Green

MAYAN AZTEC PATTERN shown in Desert Gold



WESTWIND PATTERN shown in Black and White

Frankoma has unique glaze colors: Onyx Black, Prairie Green, Desert Gold, Woodland Moss, White Sand, Brown Satin, Autumn Yellow, and Flame. We have special colors in pieces noted throughout the catalog in Flat Black, Rubbed Bisque and Coffee. Check the bottom of each page for colors available on that page and any exceptions are noted under pieces.

Why Frankoma-?

FRANKOMA POTTERY has rightfully earned its position as America's outstanding creators of "useful and beautiful" earthenware. The colors, textures and crafted designs are created at Frankoma, and are unique in American ceramics. Archeologists say that the Great Southwest was the cradle of the American Indian's culture. All tribes of the Southwest were potters, producing grain storage jars, water pots, serving bowls, pitchers, plates and such pieces as they needed to store, prepare and serve their food. Their decorations were slip painted earthen colors applied with a brush. Their motifs were taken from daily surroundings.

Our pottery of today differs very little from theirs regarding materials, inspiration and uses. They were limited as to firing methods and refinement of raw materials. We have added glazes and controlled temperatures and developed complex body compositions, but our common uses for pottery are the same.

Frankoma entered the field of ceramics in 1933, utilizing the heritage left it by its predecessors, the Southwest Indians. Our aim was to combine the traditional art of the Indians, the spirit of the American Pioneer and the creative tendencies of the youth of the Great Southwest, and mold them into good pottery forms.

John Frank, originator of "Frankoma," came to Oklahoma from Chicago in 1927. His teaching Art and Pottery at the University of Oklahoma and his work with the geological survey — unearthing the Oklahoma clay deposits — brought together valuable material for his future venture of "potting." The natural inspiration of the Indians and the opportunities in the new state that had never had a pottery was too much of a challenge to let pass. In 1933 he started a "studio" pottery in Norman, Oklahoma, — equipped with one small kiln, a butter churn for mixing clay, a fruit jar for grinding glazes and a few other crude tools and tables. It was necessary to continue teaching until enough ware was produced to prove that a product could be made of Oklahoma clays that was a contribution to Art and Ceramics and still salable — at a profit. Resigning his teaching in 1936 he and his wife, Grace Lee, working side by side, set out on a venture of creating beautiful pottery for every day living. They felt the need of using Oklahoma clays for Oklahoma's first pottery. First a clay from Ada was used, then in 1954 a red burning clay dug at Sapulpa became the basis for all Frankoma ware. In 1938 the "studio" grew into a small factory as it moved from Norman to Sapulpa, where it is now.

Frankoma demanded of itself to make as fine a pottery as could be made considering the limitations of its materials. This means constant research to take advantage of raw materials and processes as they are brought to light.

Pottery enjoys so many advantages over the more "refined" and delicate ceramic wares. Frankoma Pottery is manufactured by its unique once-fired process—clay body and colored glaze are fused and fired at the maturing point of the clay, and tempered as it slowly cools. It can be used "indoors—outdoors" because of its ruggedness and durability. It can really "take" the handling of every day use. It can be used in a dishwasher. It is also ovenproof and food can be served in

The Late John Frank and Grace Lee Frank exemplify true American determination and the Free Enterprise System. They started with only a dream, and through hard work created one of America's most unique potteries recognized the world over. 1971 they were named, "National Small Businessman of the Year" and personally recognized by the President of the United States for their accomplishments. The business is continuing in the same tradition by their daughter Joniece Frank and a trained, dedicated staff.



The Late John Frank and Grace Lee Frank



the same dish in which it is baked or prepared. It also keeps foods and drinks hot much longer.

Color is such an indispensable part of today's decor, and Frankoma creates an exciting wide range of colors and textures. Eating from lovely textured and beautifully colored dishes is a fascinating experience. Our "Rutile Art Glazes" which have identified Frankoma's unique tableware around the world have successfully been produced only on our colored earthenware clay. By applying these unique glaze colors in various thicknesses according to pattern and design, the red body shows through the glaze giving it a beautiful mottled effect when fired. The first to introduce colored dinnerware on the market in the 1940's was one of the basic reasons John Frank was presented the award "1972 Marketing Man Of The Year".

No ceramic product seems so close to the artists as pottery—so much so that one can almost trace the potter's fingerprints as he originally formed the body, lips, handles, and designs of a piece. This is an important consideration with Frankoma, for we are artists first, and clay is only the medium of expression. "If art is good, it will live" was a statement made by John Frank, which has been proven many times over. One piece has been produced since the first studio pottery 42 years ago, others almost as long and still remains in demand. Yet Frankoma Pottery constantly creates new designs. Frankoma is versatile. Bake beans in a flower pot or arrange flowers in a gravy boat. What fun you can have by serving salad in a cornucopia. Your imagination creates its use.

Frankoma with its modern plant and latest equipment has been able to maintain its very popular price range in the face of higher materials, taxes and labor costs and the influx of foreign goods; yet it maintains the original concept that made it accepted as a standard of fine "Pottery" — every piece should be both useful and beautiful and be a contribution to both art and ceramics. "Frankoma" which includes its Frankoma Family of Employees and Accounts, and the family of John Frank will continue to do just that, so that every piece will add to your daily pleasure of casual living.



1967

"Gifts for The Christ Child"



1968

"Flight Into Egypt"



1969

"Laid in a Manger"



1970

"King of Kings"



1971

"No Room in the Inn"



1972

"Seeking The Christ Child"



1973

"The Annunciation"

FRANKOMA CHRISTMAS MEMORIAL PLATES

In 1965 The Late John Frank, Artist and Founder of Frankoma Pottery created the first annual Christmas plate made in America. They were inspired by the Christmas story and the fact that the life of Christ has been the inspiration of more "Art" in all of its mediums, than any one subject in the history of the world. A self imposed demand was that every plate should have a scriptural background for each years renderings. No other pottery to our knowledge has attempted such a religious annual commemorative plate in the history of America.

They are done in low bas-relief, with sharp enough detail, and sufficient good modeling as to make each plate a treasured piece of **sculpture**, as well as tell a story relative to Christmas time and the life of Christ. They are done in a semi-translucent "Della Robbia" white glaze. The plate is 8½ inches in diameter; the master mold was signed by Mr. Frank through 1973. Beginning in 1974 the master mold is signed by his daughter Joniece Frank; all plates are copyrighted. The production is limited to those that are actually sold up till about the 10th of December. The master mold is destroyed on Christmas eve, and there are none made after that. The edition is limited to that year.

These plates are introduced in early spring and only sold through Frankoma Pottery dealers, for it was created as a bonus for their participation and selling Frankoma Pottery. We have tried to keep the price very reasonable so that more people can afford to own them, collect and enjoy them.

We hope they will be a spiritual inspiration and reminder of the lasting value of the scriptures, and a blessing to all those who possess them.



1966

"Bethlehem Shepherds"



1965

"Good Will Towards Men"

Past Issues

No Longer Available

From Factory



1974

"She Loved and Cared"



1975

"Peace on Earth"

\$5.00

AMERICAN BICENTENNIAL COMMEMORATIVE PLATES



1972

"Provocations"

Past issues no longer available.



1974 — Battles For Independence



1973

"Patriots — Leaders"



1975

"Victories for Independence"

\$5.00

"Victories for Independence" is the fourth in a series of five plates being made by Frankoma Pottery, Inc., to celebrate the 200 years of American Independence.

We believe this series of five is the only series of its kind being produced in America, and significantly, is being produced from American clay, — yes, from Oklahoma soil. They are also being priced so reasonably that most Americans can afford to collect them and proudly own them.

They portray significant events relative to the American Revolution, starting with the beginning of the revolution and continuing through that time in history until Independence was achieved. On the back of the plates are signatures of the signers of the Declaration of Independence. We believe the set of five will eventually be one of the great treasures of collectors throughout the United States. There will only be five and the molds will be destroyed every New Year's eve for the plates produced that year. They are 8½" in diameter; color, White Sand; foot drilled for hanging; all plates are copyrighted. They are sculptured in low Bas-relief. The plates are signed by the artists: Mr. Frank in 1972 and 1973 and by his daughter Joniece Frank in 1974 and 1975.

"TEEN-AGERS OF THE BIBLE"



1973 — Jesus The Carpenter



1975 — "Jonathan The Archer"

\$5.00

Past issues no longer available.



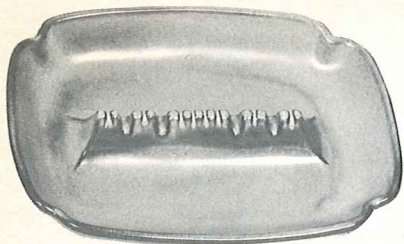
1974 — David The Musician

ONE OF THE MOST UNIQUE "COLLECTABLE PLATES" PRODUCED IN ANY COUNTRY TODAY. Not in 2,000 years since Christ have "teen-agers" of the Bible as such been featured in either Art or Literature to our knowledge. — Until we started this series of plates.

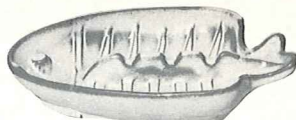
We produce one plate each year, featuring different teen-agers, for ten years. The mold is destroyed Christmas eve. The plate is 7" in diameter; color — Desert Gold; Foot drilled for hanging: The master mold is signed by the artist; Mr. Frank signed the first one. Beginning in 1974, the master mold is signed by his daughter, Joniece Frank.

The Late Mr. Frank loved teen-agers and young people and through his interest in them did he conceive this idea. It will prove to be one of the greatest collector items ever produced. A great gift for young people and a treasure for all ages.

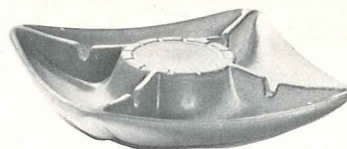
ASH TRAYS AND ACCESSORIES



489—10" ASH TRAY WITH SAFETY REST—4.00



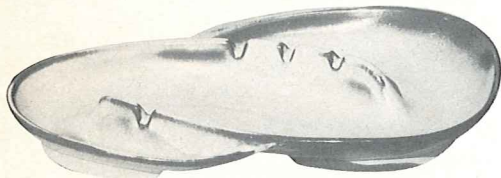
T8—7" FISH—2.00



490—7" SAFETY ASHTRAY W/CORK CENTER FOR PIPES—2.50



512



F203—13½" TEAR DROP—4.00



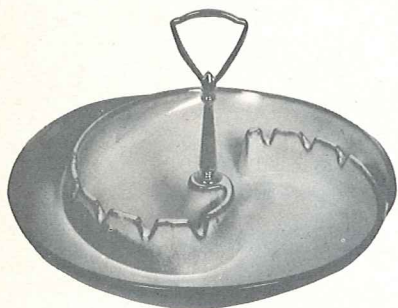
453—7" ARROW HEAD—2.00



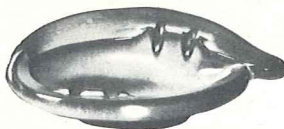
469—4½" SAFETY ASHTRAY—1.00



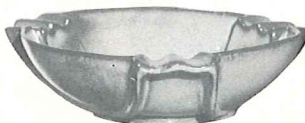
513



30T—10" ROUND ASH TRAY—5.00
30—WITHOUT HANDLE—4.00



452—7" FREE FORM—2.50



458—7" THREE SIDED—2.50



INDIAN HEAD: MINIATURE WALL HANGING MASK: #135 — 4" TALL — 1.50



477



463



474

MINIATURE TRAYS 3" TO 4" 1.00 EACH

ABOVE ITEMS AVAILABLE IN ALL COLORS AND COFFEE — ADD 50% FOR FLAME

SIZES ARE APPROXIMATE AND MAY VARY SLIGHTLY.

SPECIAL STATE & SOUVENIR ITEMS

Available only in Desert Gold, White Sand, Prairie Green and Flame: Add 50% for Flame



466R—ROAD RUNNER ASH TRAY—1.50



C1R—ROAD RUNNER MUG—2.00



K1—KANSAS ASHTRAY—1.50

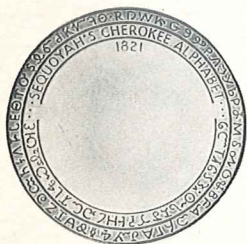


461 — 3½" OKLAHOMA ASHTRAY—1.25



459 — 4½" TEXAS ASHTRAY — 1.25

NOTE: 461 & 459 AVAILABLE IN ALL COLORS



7FS—CHEROKEE ALPHABET PLATE



TEX-1—TEXAS STATE PLATE



OK-1—OKLAHOMA PLATE



MO-1—MISSOURI STATE PLATE



K-3—KANSAS STATE PLATE

8½" STATE PLATES—PLATES FOOT DRILLED FOR HANGING—2.50



458LC—CRAWFISH ASHTRAY—2.50



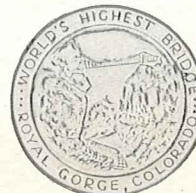
1CLC—DEMITASSE CRAWFISH CUP—1.25



M1LC—CRAWFISH 15 OZ. STEIN—2.00



LCTR—CRAWFISH TRIVET—2.00



R6TR — 6" ROYAL GORGE TRIVET — 2.00



K2—KANSAS TRIVET—2.00



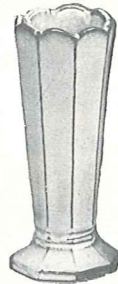
21-8" FREE FORM VASE-3.00



20-6" BUD VASE 1.50



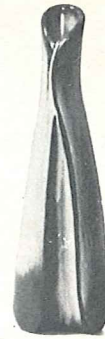
28-6 1/2" BUD VASE-1.50



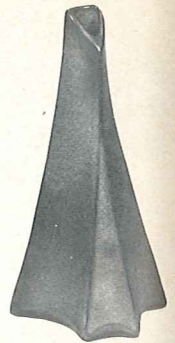
38-6" OCTAGONAL VASE-2.00



43-8" BUD VASE-2.00

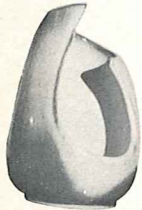


46

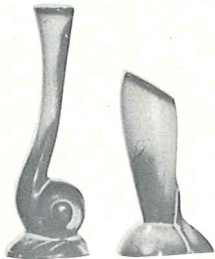


41

9" BUD VASES-2.00



302-CANDLE VASE-2.50



31-6" BUD VASE-1.00

32-4" BUD VASE-1.00



T2-7" BAMBOO VASE-2.00



235-6" FLOWER ARRANGER-3.00



26LC-6 OZ. TUMBLER VASE-1.50



39-6" TRIANGLE PLANTER-3.00



56-7" CORNUCOPIA VASE-2.50



7JH-9" BOTTLE VASE- WITH LID-3.50 WITHOUT LID-3.00



72-10" RINGED CYLINDER-3.50



F55-17" WINE BOTTLE-4.50

F55 NOT AVAILABLE IN FLAME

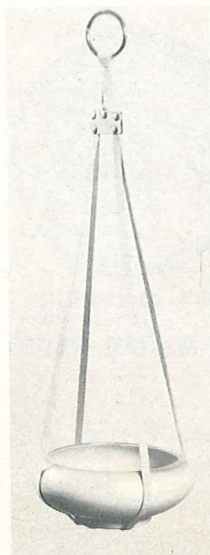


Universal Macrame Hanger which can be used with many shapes and sizes of Frankoma. Pictured here is just one of many ideas.

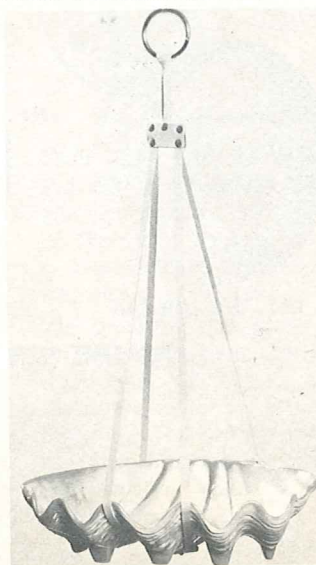
70-8 1/2" RINGED JARDINIERE WITH HANGER-12.00

MH-MACRAME HANGER ALONE-6.00

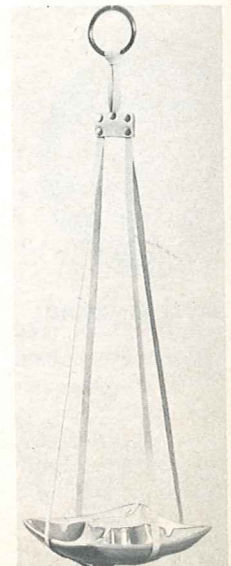
HANG IN THERE!!!
Universal leather hanging strap. Pictured here with three different pieces to show you its unlimited uses. Almost any shape and size of Frankoma cradles in this smart braided strap.



212-8" ROUND BOWL W/STRAP-5.50 STRAP ONLY-3.00



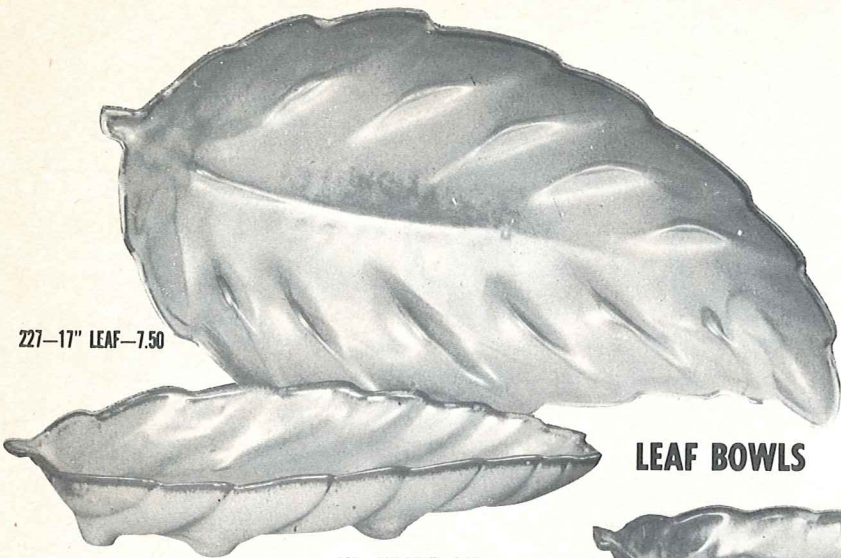
T10 - 13 1/2" CLAW SHELL BOWL W/STRAP - 9.00



490 - 4 1/2" SAFETY ASHTRAY W/STRAP - 5.50

THIS PAGE AVAILABLE IN ALL COLORS EXCEPT WHERE NOTED-ADD 50% FOR FLAME

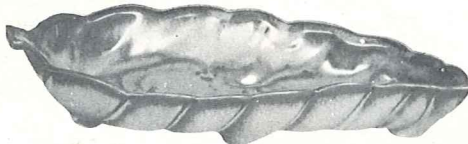
SIZES ARE APPROXIMATE AND MAY VARY SLIGHTLY.



227-17" LEAF-7.50

226-11" LEAF-3.00

LEAF BOWLS



225-7" LEAF-1.50



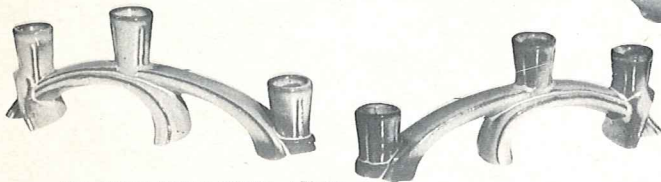
F36-4 1/2" TRI-POD VASE-3.00



201-9" BOWL-2.50



205-10" BOWL-2.50



306-TRIPLE CANDLE HOLDER-4.50 PR.



190-6" WALL VASE-2.00



312 - 4 1/2" CANDLE HOLDER - 2.00

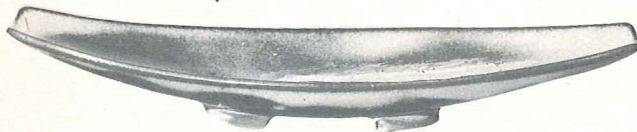
SUITABLE FOR FREE FORM ART CANDLES & 3" CYLINDER WITH CANDLE RING



311-4 1/2" CANDLE HOLDER-3.00



304-DOUBLE CANDLE HOLDER-4.00 PR.



F88-15" SHALLOW BOWL-3.50



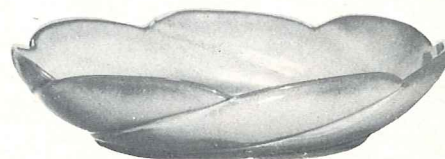
211-12" CRESCENT BOWL-4.00



305-SINGLE CANDLE HOLDER-4.00 PR.



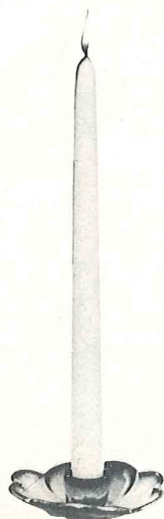
T10-13 1/2" CLAW SHELL-6.00



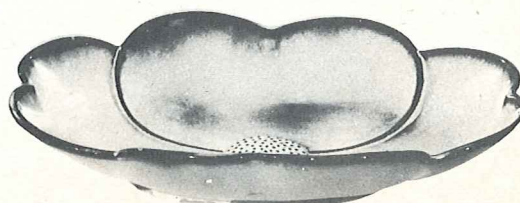
218-12" SCALLOPED BOWL-4.00



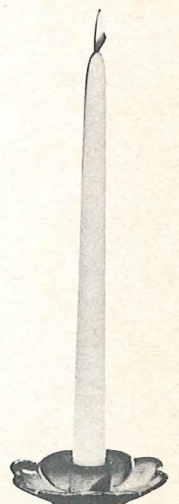
70-8 1/2" RINGED JARDINIERE-6.00
Not Available in Flame



300-DOGWOOD CANDLE HOLDER-2.50 PR.

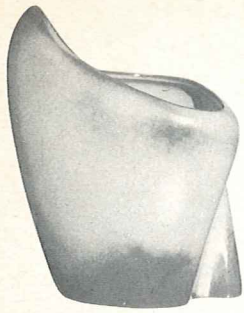


200-12" DOGWOOD FLOWER BOWL-4.00



SIZES ARE APPROXIMATE AND MAY VARY SLIGHTLY.

Appropriate Containers For Beautiful Flower Arrangements



6-7" Free Form Vase—3.00



4M-18 OZ. MUG—2.00



M2-18 OZ. STEIN—2.00



M1 - 15 Oz. Stein - 2.00



23A-6" SQ. PEDESTAL VASE—3.00



F34-8" RICE BOWL—2.00



59-6 1/2" Canteen—3.00
With Leather Hanger



F33-7" FLUTED PLANTER—2.50



F35-7" Pedestalled Vase—2.50



57S-6" CORNUCOPIA—2.00



F52-7" PEDESTALLED URN—3.00



F30AB—Pitcher & Bowl Set—5.00
F30A—5 1/2" PITCHER—3.50
F30B—7" BOWL—1.50



40AB—Pitcher & Bowl Set—3.50

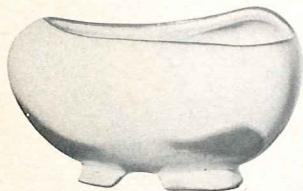
40A—SMALL PITCHER—2.25
40B—BOWL—1.25



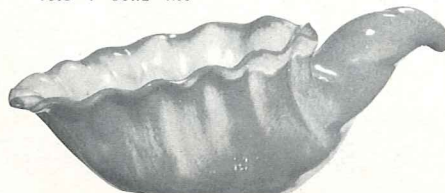
37-4" HEXAGONAL PLANTER—1.50



4N-8" BOWL—2.00



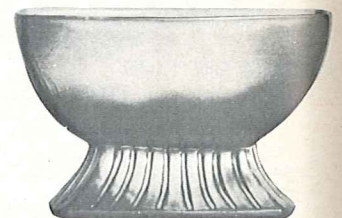
234-FOOTED FREE FORM BOWL—2.50



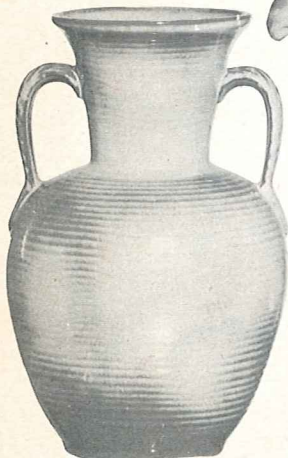
222-12" CORNUCOPIA—4.00



65-8" HEXAGONAL VASE—3.00



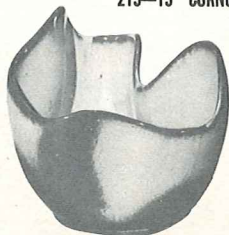
17-8"x3" PLANTER—2.50



71-10" Leaf Handled Vase—5.50



215-15" CORNUCOPIA—10.00 — Not Available in Flame



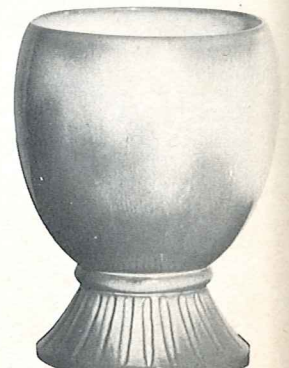
F29-6" DRAPERY VASE—2.50



22A-5" Footed Round Vase—2.00



22-7" Footed Round Vase—3.00



52-8" Urn—4.50



170-4 1/2" TURTLE PAPER WEIGHT-1.25



167 - 3 1/2" MINIATURE HORSESHOE - 1.00



B3-4" CORK BARK PLANTER-1.50



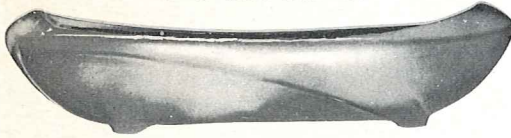
T7-4" COCONUT PLANTER-1.50



913-9" Dutch Shoe Planter-2.50



203-10" CACTUS BOWL-2.50



45-12" OBLONG PLANTER-3.00



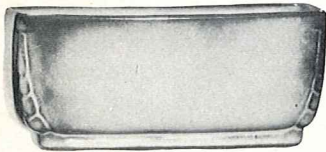
133-6 1/2" Boot-2.50
134-4" Boot-1.25



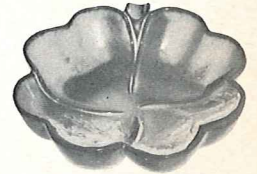
433-Planter Boot Bookends-8.50 pr.



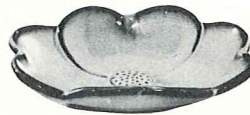
35-6" Footed Bowl-2.00



14-8" PLANTER-3.00



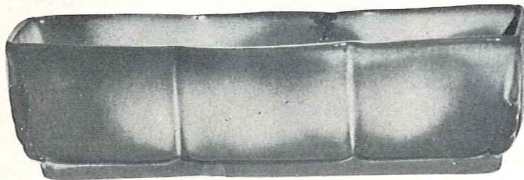
223-6" FOUR LEAF CLOVER-1.50



204-6" DOGWOOD TRAY-1.50



T9-7" SHELL BOWL-2.00



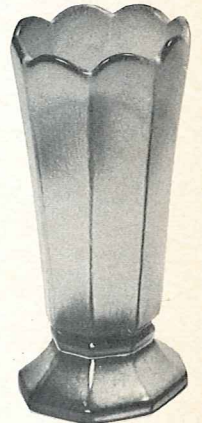
15-12" PLANTER-4.50



224-8" Round Bowl-3.00



473-6 1/2" SHELL TRAY-1.50



64-9" Octagonal Vase-3.00



A8-8 1/2" Jardiniere for 6 1/2" Pot-3.00
A10-10" Jardiniere for 8" Pot-4.00
A10-Not Available in Flame



212-8" ROUND BOWL-2.50



803-Honey Jar W/Lid-2.50



831 - 16 OZ. - 2.00



838-10 OZ. PITCHER-1.50



208A-9 1/2" Small Mallard Planter-3.50



228-7 1/2" Swan-3.00



208-11" Mallard Planter-5.00



833-24 Oz.-2.25



8-24 Oz.-2.25



835-24 Oz.-2.25



840-24 Oz.-2.25



fine ceramic sculpture for today's home

Over the years, since Frankoma started in 1933, it has purchased and created a number of fine ceramic sculpture pieces. Some of them have appeared in the line from time to time, but this is the first time they have all been presented as a group. Those who have enjoyed some of the pieces these many years have prompted us to "bring them back" and so — we are doing just that!

Today's homes are "confines around our treasures", no matter what they "cost". Only a few can afford the "originals" of masters, but even the meagerest of homes are entitled to be enriched by living with good reproductions of them. All of the originals of the items we reproduce, are owned by Frankoma. They include the works of:

JOSEPH R. TAYLOR, professor of art and sculpture, retired, University of Oklahoma. His stone, bronze, wood and ceramic sculptures have not only been shown in the finest museums and galleries across the nation, but have been purchased for their permanent collections. Art critics class him as one of America's Outstanding Sculptors today.

These compliment any part of your home.



Squirrel — #105 — 6" Tall — 3.00
 Coyote — #102 — 12½" Tall — 5.00
 Mare and Colt — #103 — 12" Tall — 5.00

The wood sculpture of **WILLARD STONE**, a Cherokee, is a part of most museums, especially of the Southwest. His unique down to earth and humanistic style has brought him into many of the leading art galleries in America. We try to faithfully reproduce the few we are privileged to own.

ACEE BLUE EAGLE, a Pawnee-Creek, was probably the best loved Indian artist of America. His first love was his unique style of "Indian Painting", which has thrilled collectors and notables around the world. Just before his premature death, he started to do work in ceramics. We know of only two pieces he allowed to be sold, and we are offering one of them, his "Medicine Man" here.

We only have one of **BERNARD FRAZIER'S** pieces, "The Collie Head Trophy" modeled for the Collie Club of America. Being a Collie fancier, you can believe it is "right". For years he was director of the Philbrook Art Museum in Tulsa and the last number of years, Artist in Residence, University of Kansas. Twice winner of the National Ceramic Art Exhibition, Syracuse, New York; has many outstanding commissions completed across the United States. He is truly a "Ceramicists Sculptor".

The "Red Irish Setter" is a reproduction of the Silver Model second place winner in the National Sculpture Show, Philadelphia. **CRAIG SHEPHARD**, the artist, has been Head of the Art Department, University of Nevada for many years.

RAY MURRAY is a Ceramic Artist, from Hawaii. His "Indian Chief" was modeled while a student at University of Oklahoma.

**REPRODUCTIONS
OF WILLARD STONE'S
WOOD CARVINGS**



Indian Maiden — #101 — 12" Tall — 5.00

These pieces available ONLY in:
 Rubbed Bisque and White Sand



These are designed as a pair for they compliment each other.
Seated Puma by Joseph R. Taylor — #114 — 7" Tall — 3.50
Reclining Puma by Joseph R. Taylor — #116 — 9" Long — 6.50



One of the few pieces sculptured after the famous Fan Dancers. It traveled the National Museum Circuit as part of the annual Ceramic Sculpture Show. **The Fan Dancer** by Joseph R. Taylor — #113 — 8½" x 13½" — 12.50.



RARING CLYDESDALE by Joseph R. Taylor — #107 — 7" Tall — 5.00



A small but charming **SEATED FIGURE**, by Joseph R. Taylor — #136 — 6" Tall — Each 5.00; Pair 10.00



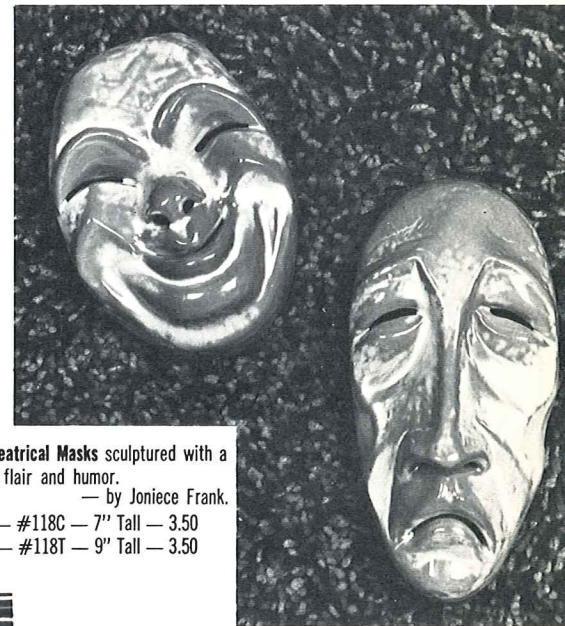
MEDICINE MAN: Probably the rarest piece of Sculpture ever modeled by the world famous Indian Chief Acee Blue Eagle: #115 — 8½" Tall — 10.00



CHARGER HORSE: Stalwart—Strong: by Joseph R. Taylor — #111 — 6" Tall — each 5.00



INDIAN CHIEF: A proud dancing warrior: by Ray Murray — #142 — 8" Tall — 3.50



Traditional Theatrical Masks sculptured with a contemporary flair and humor.

— by Joniece Frank.

Comedy — #118C — 7" Tall — 3.50

Tragedy — #118T — 9" Tall — 3.50



RED IRISH SETTER: A National Prize Winner by Craig Shephard — #120 — 6½" Tall — each 5.00

COLLIE HEAD: A Collie fanciers trophy: by Bernard Frazier — #122 — 7" Tall — each 5.00



SEATED INDIAN BOWL MAKER by Joseph R. Taylor — #123 — 6" Tall — 5.00

Mayan-Aztec Cannister Set—25.00 set

Pictured in Woodland Moss Color

These pages available in all co



24F — Flour, Cookies,
Corn Meal—8.00



24S—Sugar—7.00



24C—Coffee—6.00



24T—Tea—5.00



83 — 12" Division Relish Dish — 3.50

7PS — 9" Tray — 1.50

7CL — 8 oz. Mug — 1.50



7D—2 qt Pitcher—5.00



4Y — Spoon Holder
1.50



24H—Salt & Pepper—3.00 pair

24G — Grease — 4.00 each

4 pc. Family Sugar/Salt & Pepper—7.00 boxed

97 Series available in the color "Coffee" as shown.



97U
8 Oz. Individual Baker
3.00



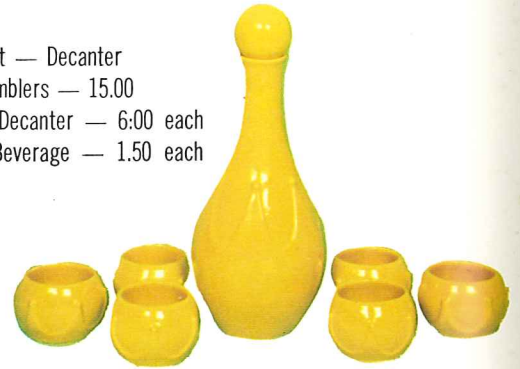
97M
16 Oz. Mug
2.00



97D
2 Quart Pitcher
5.00



97V
Cookie Jar — 6.00
(2 Quart Baker)



330 Set — Decanter
W/6 Tumblers — 15.00
330 — 24 Oz. Decanter — 6:00 each
331 — 3 Oz. Beverage — 1.50 each



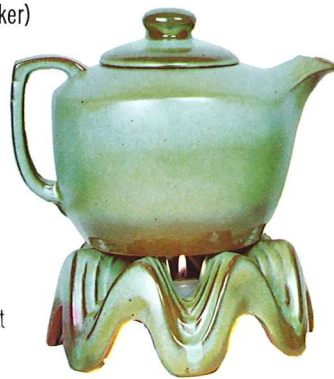
7TR — Cherokee Alphabet



ZTR—Zodiac Trivet



OK3—5 Civilized Tribes Trivet



5TL—12 Cup Teapot—6.50



WA1
Warmer
3.50

4W—3 qt. Baker—6.50



3TR—Spanish Iron



94TRC — Cattle Brand



94TRH — Horse Shoe



94TR — Rooster



LBTR—Liberty Bell



FLTR—Flag Trivet

6" Felted Trivets — Hot Plates — Available in all Colors — \$2.00 Each — \$3.00 in Flame

1 colors - - Add 50% for Flame

Ringed Cannister Set — 22.00 set

Oz. Juice—1.25
Pitcher—3.00
Baking Tray—2.50
Set — 10.50



26T—Tea—4.00



26C—Coffee—5.00



26S—Sugar—6.00



26F—Flour, Cookies,
Corn Meal—7.00



818 — Chip & Dip, with Ball Bearing Base
Regular colors—8.50
Flame as shown—13.00



80—2 qt. Pitcher—5.00



81 — 1 qt. Pitcher — 3.00 5LC — 6 oz. Juice
91 — Baking — Tray — 2.50 1.25 each
5LC set — 10.50



26H—Salt & Pepper—3.00 pair
26G—Jar—4.00
4 pc. Family Sugar/Salt & Pepper
Set—7.00 boxed

Demitasse — Miniatures — 1.25 each

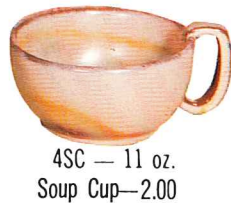


IT — Toothpick

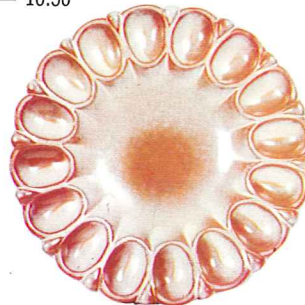
IC — Cup

IB — Sugar

IA — Cream



4SC — 11 oz.
Soup Cup—2.00



819—12" Egg Plate—5.00



6P — 11" Tray — 2.00
4SC—11 oz. Soup Cup—2.00



C4 — Sugar 1.25 each
553—Creamer 1.25 each



26LC
6 Oz. Tumbler
1.50



C-13—Gold



1.50 each
C-12—Moss



82—6 Cup Carafe & Lid—7.00
82W—Warmer—3.00
82 Set—10.00
(For Flame as shown add
50% to above Prices)



C1 — White



C2 — Brown



C3 — Gold



C4 — Green



C5 — Moss



C6 — Flame

Mugs boxed 4 to a box, if requested.



C7 — Flame



C9 — Peach



C8 — Gold



C10 — Flame



C11 — Black



7CL — Green

MUGS: for coffee, tea, milk, chocolate, soup, soda, or — You name it! Each available in any of the above colors. Sized 8-11 oz. In Flame, \$2.25 each; in any other color \$1.50 each.

Westwind

PATTERN

AVAILABLE IN: Woodland Moss, Prairie Green and White Sand: Black & White; Flame & White.



6LS—45 PC. SERVICE SET, BOXED—\$65.00

(Open Stock Price — \$74.50)

FLAME & WHITE SET — \$85.00

(Open Stock Price — \$88.75)

- | | |
|-------------------|-------------------|
| *8 — Cups | 1 — 13" Platter |
| 8 — Saucers | *1 — Creamer |
| *8 — 14 Oz. Bowls | *1 — Sugar |
| 8 — 7" Plates | *1 — Sugar Lid |
| 8 — 10" Plates | *1 — Serving Bowl |

6TS—20 PC. STARTER SET, BOXED—\$30.00

(Open Stock Price — \$32.00)

FLAME & WHITE SET — \$37.00

(Open Stock Price — \$37.50)

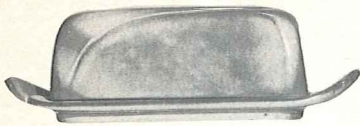
- | |
|------------------------------|
| *4 — Cups |
| 4 — Saucers |
| 4 — 7" B & B Plates |
| 4 — 10" Plates |
| *4 — 14 oz. Chili-Soup Bowls |

Set your table with these lovely color combinations: Black and White or Flame and White. They create new exciting table decor without being repetitious. The standard sets come with cup, bowl, sugar and creamer, serving bowl in black or flame (as depicted with asterisk*) and dinner plate, salad plate, saucer, platter in white. Use your own creative imagination when ordering other accessory pieces. Truly a new concept in eating fun. "Westwind", with its basic simple lines, permits freedom in expression of personality which is so important in smart contemporary homes. You'll LOVE "Westwind" — and, of course, it is all ovenproof and dish-washer proof.

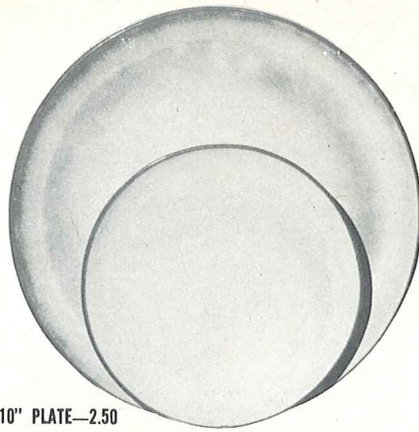
SIMPLICITY in its truest form — that's "Westwind." The carefully broken line of the shallow coupe shape is the key to the pattern. The simple unbroken line of the cup handle, with its broad thumb rest, combines grace and security.

The large and small open bakers have rolled rims for safety and ease of handling. Cleaning is no task. Much care is exercised in making these "easy-grip" knobs on the lids. This oven-to-table pottery is truly the gourmet's delight.

The homemaker today appreciates the warm, cordial earthen colors in this unique pottery. Its waxy textures are so lovely to the touch. Such tableware should be selected for its artistic qualities as well as its serviceability. "Westwind," with its basic simple lines, permits freedom in expression of personality which is so important in smart contemporary homes. You'll LOVE "Westwind"—and, of course, it is all ovenproof and dishwasher proof.



*4K—BUTTER DISH—3.50



6F—10" PLATE—2.50

6G—7" PLATE—1.50



*6B—SUGAR WITH LID—2.25

*6AB—CREAM & SUGAR SET—4.00

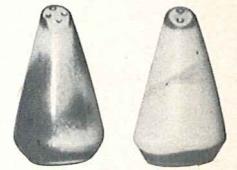


*6A—9 OZ. CREAMER—1.75



**6C—CUP—1.50

6E—5" WELLED SAUCER—1.25



*6H—SALT & PEPPER—2.50



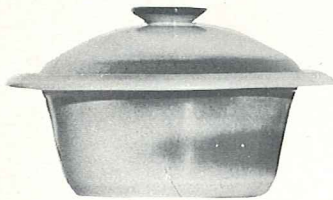
*6V—2 1/2 QT. BAKER—6.50



*5LC—6 OZ. JUICE—1.25



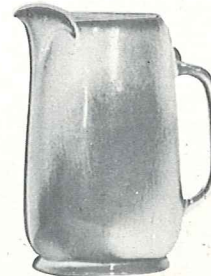
*5L—12 OZ. TUMBLER—1.50



*6VS—1 1/2 QT. BAKER—5.00



*6T—6 CUP TEAPOT—4.50



*81—1 QT. PITCHER—3.00



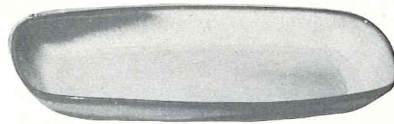
*80—2 QT. PITCHER—5.00



*6J—2 CUP TEAPOT—3.00



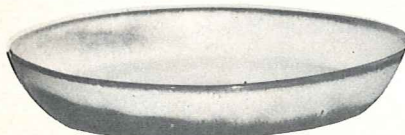
*6U—18 OZ. BAKER FOR TWO—3.50
A COVERED CANDY DISH



*5QS—13" STEAK PLATE (SHALLOW PLATTER)—2.50

*6P—11" STEAK PLATE—2.00

*5PS—9" TRAY—1.50



*91—10" BAKING DISH—2.50



*BP—6 OZ. BEAN POT
OR CUSTARD—1.00

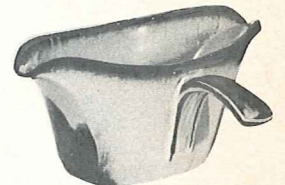


*BP—6 OZ. BEAN POT
OR CUSTARD/WITH LID—2.00



**6X—14 OZ. CHILI SOUP—1.25

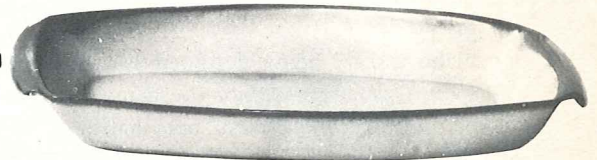
6XS—10 OZ. FRUIT—1.00



*6S—TWO SPOUT GRAVY—3.00

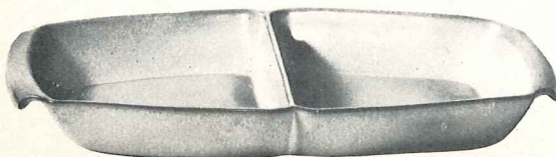


*6N—1 QT. BOWL—2.50

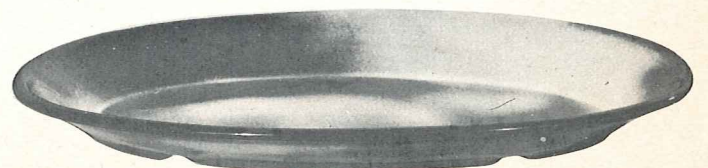


5P—17" DEEP PLATTER—10.00

*5Q—13" DEEP PLATTER—4.00



*5QD—13" DIVIDED BOWL—4.00



*TP—17" OVAL PLATTER—10.00

THIS PAGE AVAILABLE IN PRAIRIE GREEN, WOODLAND MOSS AND WHITE SAND EXCEPT WHERE NOTED

* AVAILABLE IN ALL COLORS **AVAILABLE IN BLACK & FLAME ALSO. — ADD 50% FOR FLAME

SIZES ARE APPROXIMATE AND MAY VARY SLIGHTLY.

LAZYBONES Pattern

AVAILABLE IN: Brown Satin, Desert Gold, Prairie Green.



4LS-45 PC. SERVICE SET, BOXED-\$65.00

- | | |
|----------------|----------------|
| 8-Cups | 1-13" Platter |
| 8-Saucers | 1-Creamer |
| 8-14 Oz. Bowls | 1-Sugar |
| 8-7" Plates | 1-Sugar Lid |
| 8-10" Plates | 1-Serving Bowl |

(Open Stock Price - \$76.00)

4TS-20 PC. STARTER SET, BOXED-\$30.00

- | |
|---------------------------|
| 4-Cups |
| 4-Saucers |
| 4-7" B & B Plates |
| 4-10" Plates |
| 4-14 Oz. Chili-Soup Bowls |

(Open Stock Price - \$33.00)

Our American homes are being designed and built so that home makers can take advantage of the many modern conveniences, yet develop their own personalities in color and styling.

The furnishings for these contemporary homes are practical and simplified. They must be selected carefully to preserve a cordial atmosphere, which we all wish for our family and friends.

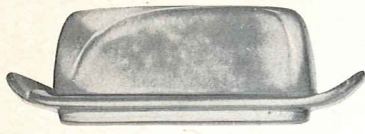
Frankoma was sensitive to these trends when this new dinnerware was being designed. The atmosphere surrounding LAZYBONES is relaxing, for you are influenced by its free flowing sculptured lines. As you accept the invitation to handle and caress each piece, you will love the way

they fit the contour of your hands, for immediately they become a part of you.

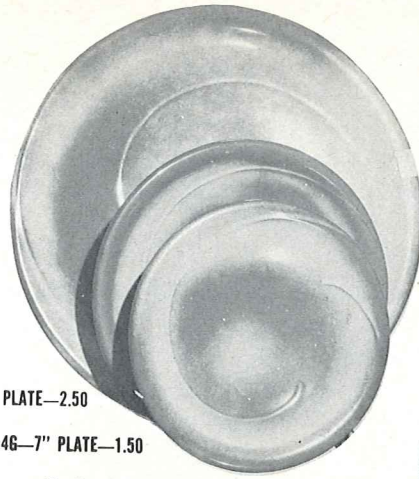
Food cooked in Lazybones can go from the oven to the table—and there are so many uses for each piece. They are designed to serve!

Notice the array of Frankoma's colors. They are the gourmet's delight, for they all compliment your food and share in making every meal an occasion. The shapes themselves are both practical and beautiful.

When you set your table with Lazybones, you are set to relax, and enjoy your share of casual living. It will be the "Talk of the Table" with your family and friends.



*4K—BUTTER DISH—3.50



4F—10" PLATE—2.50

4G—7" PLATE—1.50

4E—5" SAUCER—1.25



*5CC—5 OZ. TEACUP—1.25



*4X—14 OZ. CEREAL—1.50



*5L—12 OZ. TUMBLER—1.50



*5LC—6 OZ. JUICE—1.25



4C—Cup—1.50



*4Y—6" SPOON HOLDER—1.50



*4H—SALT & PEPPER—2.50



4A—8 OZ. CREAMER—1.75



4B—SUGAR WITH LID—2.25

4AB—CREAM & SUGAR SET—4.00



*4M—18 OZ. MUG—2.00



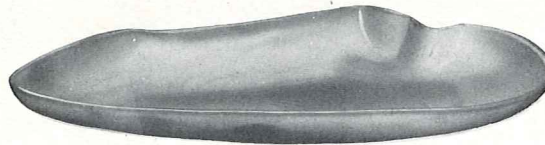
*4Z—6" SOUP—1.50



*4V—2 QT. BAKER/BEAN POT—5.00



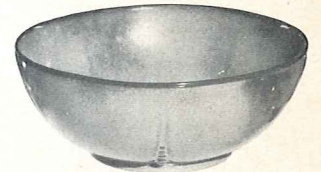
*4N—24 OZ. VEGETABLE—2.00



*4P—13" PLATTER—4.00



*4W—3 QT. BAKER/BEAN POT—6.50



*224—8" ROUND BOWL—2.50



*4QD—11" DIVIDED BOWL—4.00



*201—9" BOWL—2.50



*BP—6 OZ. BEAN POT OR CUSTARD/WITH LID—2.00



*BP—6 OZ. BEAN POT OR CUSTARD—1.00



*4SC—11 OZ. SOUP CUP—2.00



*4XL—24 OZ. SALAD OR GUMBO—1.50



*M2—18 OZ. STEIN—2.00



*M1—15 OZ. Stein—2.00



*4D—2 QT. PITCHER—5.00

THIS PAGE AVAILABLE IN PRAIRIE GREEN, DESERT GOLD AND BROWN SATIN, EXCEPT WHERE NOTED*

SIZES ARE APPROXIMATE AND MAY VARY SLIGHTLY.

* AVAILABLE IN ALL COLORS—ADD 50% FOR FLAME

WAGON WHEELS

Pattern

AVAILABLE IN: Desert Gold and Prairie Green. Green.



94LS—45 PC. SERVICE SET, BOXED—\$65.00

- 8—Cups
- 8—Saucers
- 8—14 Oz. Bowls
- 8—7" Plates
- 8—10" Plates
- 1—13" Platter
- 1—Creamer
- 1—Sugar
- 1—Sugar Lid
- 1—Serving Bowl

(Open Stock Price — \$74.50)

94TS—20 PC. STARTER SET, BOXED \$30.00

- 4—Cups
- 4—Saucers
- 4—7" B & B Plates
- 4—10" Plates
- 4—14 Oz. Chili-Soup Bowls

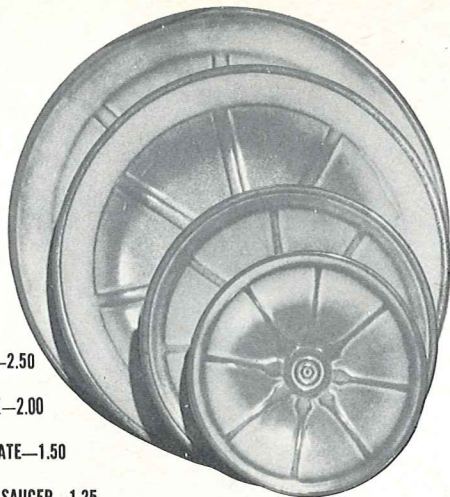
(Open Stock Price — \$32.00)

THE ROMANCE OF THE WEST lives on with our WAGON WHEEL Pottery! The pitchers are quaint and practical. The cup is the hub of a wheel, and the "good luck" horseshoe makes the handles for the baker. There are bands of cattle brands on the platters and bowls. The whole set is an application of the fine designs one can find on any ranch.

A most colorful part of the history of the Southwest is the cattle industry, and the rancher's "coat of arms" is his "cattle-brand." The covered wagon, "wagon wheels," horses, the cowboys, cattle, the "little dogies," and above all, the "cattle-brand" are symbols of this natural industry.

Many of these brands are fine designs, and most of them have a definite meaning. Some are the initials of the owner, others may refer to hills on the ranch, the number of acres he owns, the number in the family, his monogram, key, a hat, or any one of a thousand items of interest. Each brand is usually registered in the county in which it is used.

We are proud to take this opportunity to eulogize these pioneers of the Southwest, and include a number of these brands in decorating some of the pieces of our WAGON WHEEL set. Every piece is oven-proof and dish-washer proof.



94FL—10" PLATE—2.50

94F—9" PLATE—2.00

94G—7" PLATE—1.50

94E—5" SAUCER—1.25



94H—SALT & PEPPER—2.50



94M—16 OZ. MUG—2.00



94XL—20 OZ. BOWL—1.50



94B—SUGAR WITH LID—2.25



94A—8 OZ. CREAMER—1.75

94AB—CREAM & SUGAR SET—4.00



94C—5 OZ. CUP—1.50



94X—14 OZ. CEREAL—1.25



94V—2 QT. BAKER/BEAN POT—5.00



94L—12 OZ. TUMBLER—1.50



94XO—6 OZ. DESSERT—1.00



94QD—13" DIVIDED BOWL—4.00



94W—3 QT. BAKER/BEAN POT—6.50



94Q—13" PLATTER—4.00



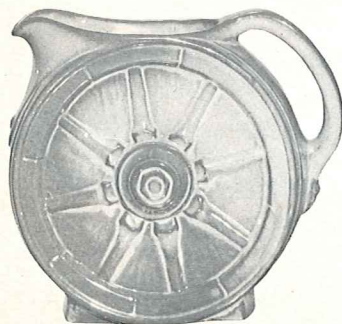
94N—1 QT. VEGETABLE BOWL—2.50



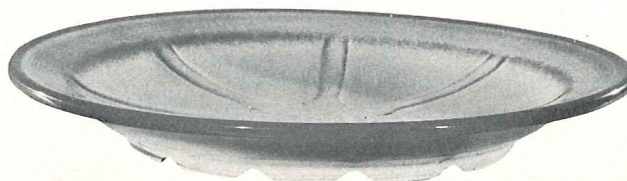
94P—17" PLATTER—10.00



94J—2 CUP TEAPOT—3.00



94D—2 QT. PITCHER—5.00



94FC—15" CHOP PLATE—10.00



94T—6 CUP TEAPOT—4.50

Plainsman Pattern

AVAILABLE IN: Woodland Moss, Desert Gold, Brown Satin and Prairie Green.



5LS-45 PC. SERVICE SET, BOXED-\$65.00

- | | |
|----------------|----------------|
| 8-Cups | 1-13" Platter |
| 8-Saucers | 1-Creamer |
| 8-14 Oz. Bowls | 1-Sugar |
| 8-7" Plates | 1-Sugar Lid |
| 8-10" Plates | 1-Serving Bowl |

(Open Stock Price - \$74.50)

5TS-20 PC. STARTER SET, BOXED-\$30.00

- 4-Cups
- 4-Saucers
- 4-7" B & B Plates
- 4-10" Plates
- 4-14 Oz. Chili-Soup Bowls

(Open Stock Price - \$32.00)

For thousands of years men have gloried in creating "atmosphere" around their favorite sport—eating. Harmonious and beautiful surroundings not only add to the pleasure of eating but make it a healthier pastime. We still lavish all we possibly can on our banquets and feasts, for we love to eat.

Men have always managed to devise some sort of receptacle to hold food, either raw or prepared, and the quality and value of his utensils depend more on his love of beauty and ability to create than the size of his purse. Of the many materials used throughout the centuries, in all countries of the world — iron, copper, brass, stone, wood, silver, and even gold, ceramics has remained the favorite of all eating vessels. Since the acceptance of "whiteware" in the sixteenth century, most fine tables have been set with "dinner ware" or "china." This is sometimes a white earthenware, or a compounded china body, or even a translucent true porcelain. Its quality depends on the selec-

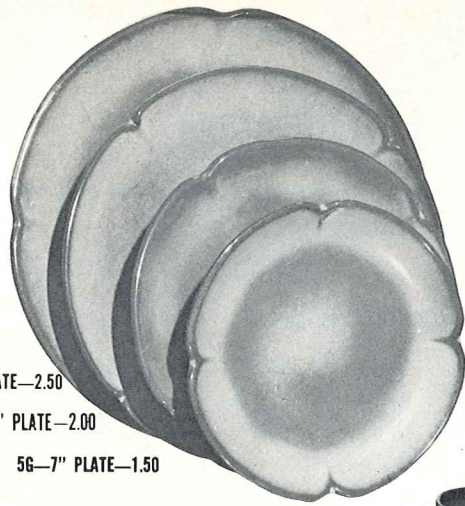
tion and handling of the materials plus its Art value expressed in line, form and color.

Today, from the crudest earthenware to the finest porcelain, we still choose CERAMICS of some kind for our table. Although we would not eliminate "whitewares," we love our modern pottery tableware. Why not? It is gay, happy, and colorful, and surely fits into our modern mode of living. It is with this in mind that we have created FRANKOMA TABLEWARE.

For one design we have gone to the Great Plains of the Southwest and offer you the "PLAINSMAN" pattern. Its well chosen, simple lines and sturdy shapes create an atmosphere benefitting its heritage. It is most appropriate "for fun or fashion." Every piece is oven-proof and dishwasher proof.



*5V—2 QT. BAKER/BEAN POT—5.00



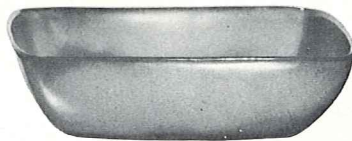
5F—10" PLATE—2.50

5FS—9" PLATE—2.00

5G—7" PLATE—1.50



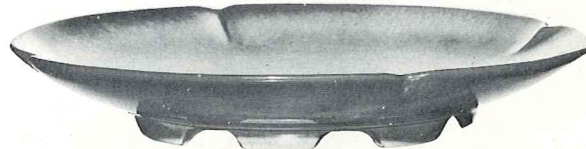
*5W—3 QT. BAKER/BEAN POT—6.50



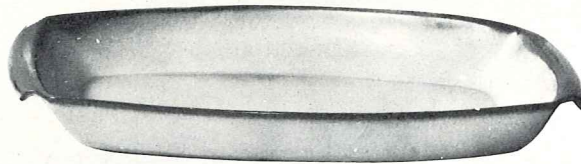
*5NS—9" VEGETABLE—2.50



*5N—4½" QT. BOWL—10.00



5FC—15" CHOP PLATE—10.00



5P—17" PLATTER—10.00

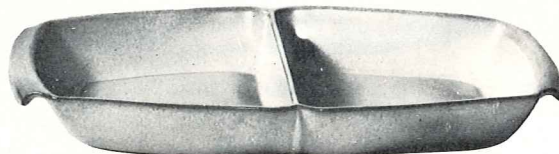
5Q—13" PLATTER—4.00



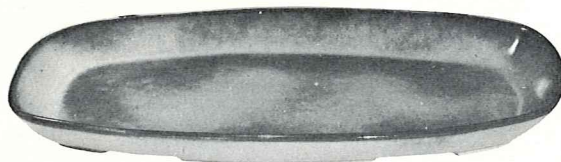
5XL—20 OZ. BOWL—1.50

5X—14 OZ. CEREAL—1.25

5XS—9 OZ. FRUIT—1.00



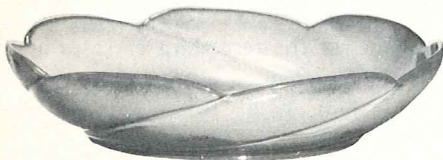
*5QD—13" DIVIDED BOWL—4.00



*5QS—13" PLATTER—2.50

*5PS—9" TRAY—1.50

*6P—11" PLATTER—2.00



*218—12" BOWL—4.00



5S—20 OZ. GRAVY BOAT—3.00



*6T—6 CUP TEAPOT—4.50



*6J—2 CUP TEAPOT—3.00

5AB—CREAM & SUGAR SET—4.00



*5DC—DEMITASSE CUP—1.25

*5DE—DEMITASSE SAUCER—1.25



*5A—12 OZ. CREAMER—1.75



*5CL—12 OZ. MUG—1.50



*5B—SUGAR WITH LID—2.25

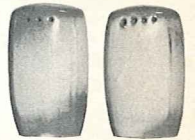


*5CC—5 OZ. TEACUP—1.25



5C—CUP—1.50

5E—5½" SAUCER—1.25



*5HS—SALT & PEPPER—2.50



*5M—16 OZ. MUG—2.00



*5L—12 OZ. TUMBLER—1.50



*5DB—6 OZ. SUGAR—1.50



*5DA—6 OZ. CREAMER—1.50



*5TL—12 CUP TEAPOT—6.50



5D—3 QT. PITCHER—6.00

THIS PAGE AVAILABLE IN BROWN SATIN, DESERT GOLD, PRAIRIE GREEN & WOODLAND MOSS, EXCEPT WHERE NOTED*.

* AVAILABLE IN ALL COLORS—ADD 50% FOR FLAME

SIZES ARE APPROXIMATE AND MAY VARY SLIGHTLY.

MAYAN-AZTEC Pattern

AVAILABLE IN: Desert Gold, Prairie Green, White Sand and Woodland Moss.

7LS-45 PC. SERVICE SET, BOXED-\$65.00

- 8-Cups
- 8-Saucers
- 8-14 Oz. Bowls
- 8-7" B & B Plates
- 8-10" Plates
- 1-13" Platter
- 1-Creamer
- 1-Sugar
- 1-Sugar Lid
- 1-Serving Bowl

(Open Stock Price - \$73.00)



7TS-20 PC. STARTER SET, BOXED-\$30.00

- 4-Cups
- 4-Saucers
- 4-7" B & B Plates
- 4-10" Plates
- 4-14 Oz. Chili-Soup Bowls

(Open Stock Price - \$32.00)

1,000 YEARS before Columbus "discovered" America, there flourished a civilization in this country whose artistic, social, and religious standards far surpassed any European peoples up to that time. Many archeologists not only compare the art and architecture of the Mayans and Aztecs favorably with that of ancient Egypt, but in many respects prefer their achievements in art importance. THESE were the FIRST Americans.

It is well established that the nucleus of American Indian tribes spread from the Great Southwest region. Our particular interest is in those who went South—the Mayans and Aztecs. They have given to the world some of its richest art treasures. The "golden age" of Mayan Art, in which they developed their pantheon, built their temples, perfected their Arts, social structure and government, occupied the first few centuries after Christ.

The Great Temple in Copan, Yucatan, built to the War Diety, was completed just before the Spanish invasion. The temple compound covered almost a quarter square mile, comprising seventy-eight buildings — a most stupendous achievement and a monument to architectural beauty.

The most widely known of the Mayan and Aztec arts are the numerous hieroglyphs. They were used profusely on buildings, altars, monuments, and other such places, not only for embellishments, but for the recording of information. The decorations on the stairway of Copan alone were composed of over 2,500 different glyphs. Freehand methods prevailed entirely, for their art was their only written language.

Pottery has always evidenced every strata of culture. Fragments of pottery have been found where all other records have been destroyed, even in prehistoric times. Throughout the long history of all Indian tribes, pottery has been the universal art. The pottery of the ancient Southwestern Indians challenges comparison in color, form, and mastery of line with that of the Greek and Orientals.

It is through the inspiration of this wealth of beauty that FRANKOMA has created its Mayan-Aztec tableware.



7V-2 QT. BAKER/BEAN POT—5.00



7W-3 QT. BAKER/BEAN POT—6.50



7HS-SALT & PEPPER—2.50



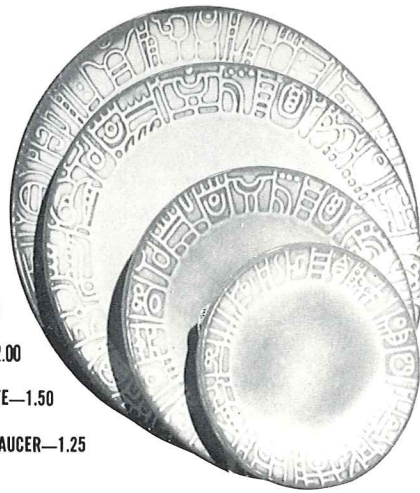
7K-BUTTER DISH—3.50



*7PS-9" TRAY—1.50



*7T-6 CUP TEAPOT—4.50



7FL-10" PLATE—2.50

7F-9" PLATE—2.00

7G-7" PLATE—1.50

7E-5" SAUCER—1.25

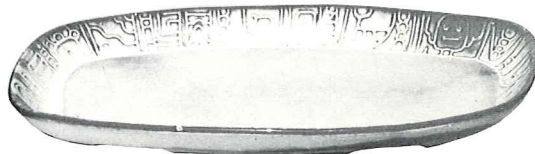


7B-SUGAR WITH LID—2.25



7A-6 OZ. CREAMER—1.75

7AB-CREAM & SUGAR SET—4.00



7QS-13" STEAK PLATTER (SHALLOW PLATTER)—2.50



7Q-13" DEEP PLATTER—4.00



7FC-15" CHOP PLATE—10.00



7TP-17" AZTEC OVAL PLATTER—10.00



*7D-2 QT. PITCHER—5.00



7C-CUP—1.50



*7CL-8 oz. MUG—1.50



*C-4 -12 Oz. Coffee Mug
1.50



*7M-14 OZ. MUG—2.00



7XO-8 OZ. FRUIT—1.00



7X-14 OZ. CHILI-SOUP—1.25



7XL-20 OZ. SALAD—1.50



7N-1 QT. VEGETABLE BOWL—2.50



*7J-2 CUP TEAPOT—3.00



Past Issues No Longer Available From Factory



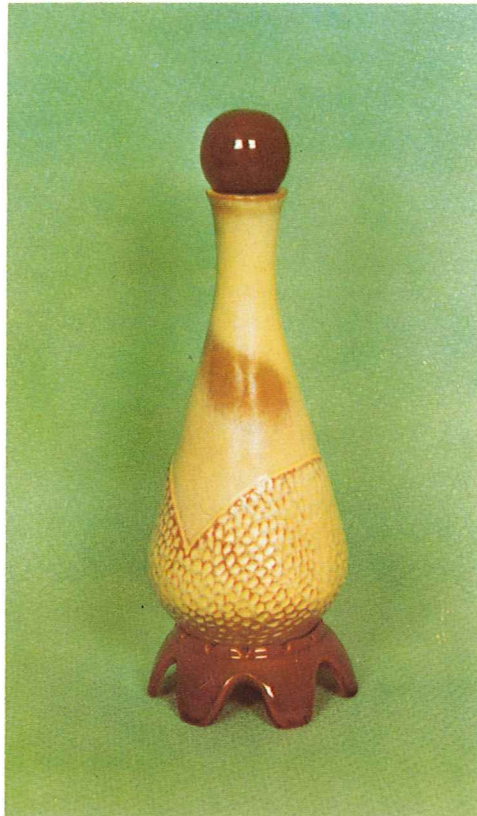
Available in 1975
Color: Autumn Yellow

The original "Elephant Mug" was created for the National Republican Womens Clubs and copyrighted by Frankoma in 1969 and patented in 1970. Now each year this mug is produced by Frankoma as a stock item. The current mug is only available during that year — no back numbers are available at the plant. Each year the color is different. © F.P. 1969, U.S. Pat. No. D214,868

5 oz. coffee mug \$3.00 each

Available only through Frankoma Accounts, Retail Shop at Plant and Republican Womens Clubs.

TERMS OF SALES: PRICES ARE NET
PLEASE ADD 2% FOR STATE SALES
TAX AND INCLUDE CHECK WITH
ORDER. WE WILL BILL YOU FOR
POSTAGE AND INSURANCE.




Pictured is a 13" Bottle Vase, the seventh in a series of "Limited Edition Pieces." The mold is signed by the artist — Joniece Frank. Each piece is numbered and the master mold will be destroyed after 3,500 impressions. No seconds are sold. The color is Desert Gold and Coffee.

No. V-7 \$10.00 Each

Available through Frankoma Accounts
and Retail Shop at Plant

"DONKEY MUG"
Will Be Available
June 1, 1975
Color: Autumn Yellow
\$3.00 Each



There has been much said during the last few years about "lead poisoning" from using pottery dishes and containers. Shown here is the Official Seal of Certification, that this ware is ALL safe from lead poisoning. • Practically all pottery wares made in the U.S. are so certified, so . . .

Buy Frankoma!
Be Safe • Buy American

You can dress FRANKOMA "up or down," for it is both useful and beautiful, whatever the occasion. All the extra serving pieces, as well as the centerpiece and accessories, are made to match in color and texture, and they are ovenproof and dish-washer proof.

Frankoma is ovenproof but does not claim to be flameproof. You will find it very durable and serviceable wherever china or pottery can be used. It is designed to be entirely satisfactory and we would appreciate letting the factory know of any deviation from this standard.

You are a welcomed guest at the factory any time. Should you come during working hours, we will be glad to conduct you through the plant to see Frankoma made.

• Prices subject to change without notice.

Prices shown are suggested retail.

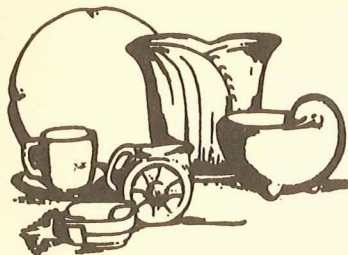
Prices may vary due to shipping costs.

FRANKOMA POTTERY, INC.

— On Frankoma Road —

P. O. Box 789 • 918-224-5511

Sapulpa, Oklahoma 74066



FRANKOMA POTTERY, INC.
BOX 698 · SAPULPA · OKLAHOMA

74066

PHONE 224-5511

Birthdays

Anniversaries

Christmas

END THE WORRY OF SHOPPING, AND
THE TROUBLE OF PACKING & SHIPPING

Let us send your gift, direct to your friends and relatives.

Frankoma is the most complete line of dinnerware and artware produced in America today. We also have a fine line of sculpture. Reproductions by several famous American artists.

If you are in the area please drop by the plant. We would be happy to show you our complete line, and take you on a tour of the plant. If you can't come by, order your gifts by mail.

THERE IS NO HANDLING OR PACKING CHARGE.

Along with your order, include:

1. A check for pottery, plus 2% sales tax. (We will bill you for the postage and insurance).
2. Date you want it shipped.
3. Your gift card, or we will sign one for you.

--Looking forward to hearing from you,

Sincerely,

Dave Ballard

Dave Ballard

dinnerware
sculpture
artware

for those who like nice things _____

FRANKOMA POTTERY, INC.
SAPULPA, OKLAHOMA 74066

DATE _____

SHIPPING DATE _____

VIA _____

Store Name _____

Street Address _____

DEPT. NO. _____

TERMS: _____

F.O.B. Sapulpa, Oklahoma

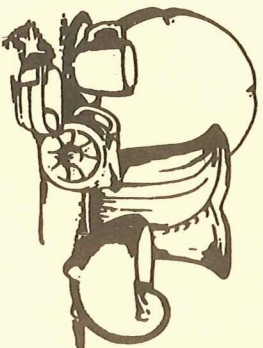
P.O. Box No. _____ Route No. _____ or Highway _____

City _____ State _____ Zip Code _____

Form 103 Rev.

Quantity	Stock No.	COLORS								DESCRIPTION	Dozen	Extension
		Black	Green	Gold	Moss	White	Brown	Yellow	Flame			

Order Authorized by, _____



FRANKOMA POTTERY, INC.
BOX 698 · SAPULPA · OKLAHOMA

74066

PHONE 224-5511

FRANKOMA'S COLLECTABLES

for

1975



"PEACE ON EARTH"

Frankoma's 11th Christmas Memorial Plate

This edition, like all previous ones is limited, and the mold will be destroyed on Christmas eve, 1975. The COLOR: Della Robbia White, SIZE 8 1/2" diameter. Drilled in foot for hanging. PRICE: \$5.00, or prepaid to anyplace in the United States \$6.00 Include check with order.



"VICTORIES FOR INDEPENDENCE"

Frankoma's 4th in a Series of the Bi-Centennial Plates

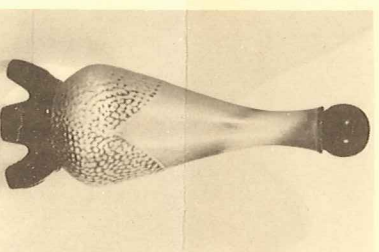
This edition, like the previous ones, is also limited, and the mold will be destroyed on New Year's eve, 1975. COLOR: Della Robbia White. SIZE: 8 1/2" diameter. Drilled in foot for hanging. PRICE: \$5.00, or prepaid to anywhere in the United States \$6.00. Include check with order.



"JONATHAN — THE ARCHER"

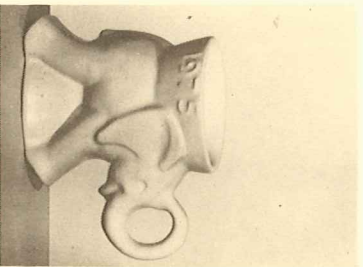
Frankoma's 3rd in a series of ten "TEEN-AGERS OF THE BIBLE"

This edition, like the previous ones is limited, and the mold will be destroyed on Christmas eve, 1975. COLOR: Desert Gold. SIZE 7" diameter. PRICE \$5.00 prepaid, or to anyplace in the United States \$6.00. Include check with order. Artist Proof: Signed in the clay by the artist \$10.00 each. \$11.00 prepaid.



V7 BOTTLE VASE

Frankoma's 7th in a series of "Limited Edition" Vases. The mold is signed by the Artist, Joniece Frank, and will be destroyed after 3500 impressions. This is the first to be designed by Joniece Frank. Each piece is numbered. COLOR: Desert Gold and Coffee. PRICE \$10.00, or prepaid to anyplace in the United States \$11.50. Include check with order.



1975 ELEPHANT MUG

The original 5-oz. mug, was created and patented by Frankoma. Each mug is dated and the color changes each year. A real conversation piece. COLOR: Autumn Yellow outside and White inside. PRICE \$3.00 or prepaid to anyplace in the United States \$4.00. Include check with order.

"DONKEY MUG"

Will be available June 1, 1975. COLOR: Autumn Yellow. \$3.00 each or \$4.00 prepaid to anyplace in the United States.

All collectables are in production, and are ready for immediate shipment
See Frankoma's catalog for complete stories on each item.